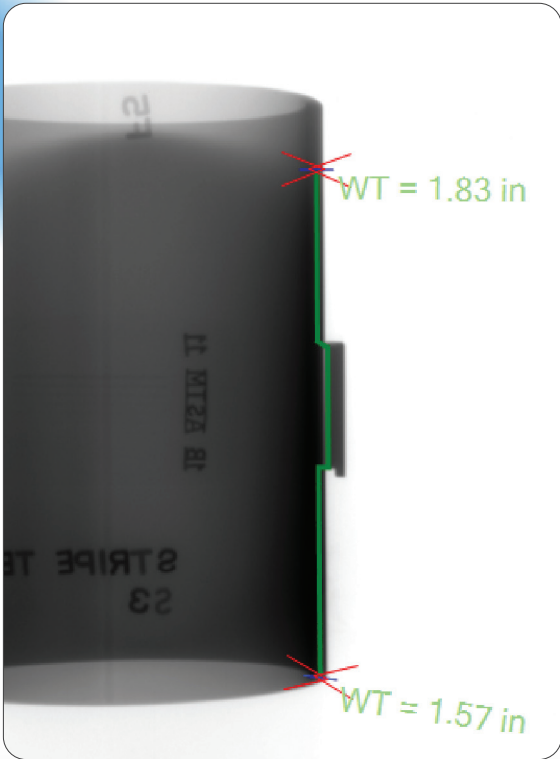
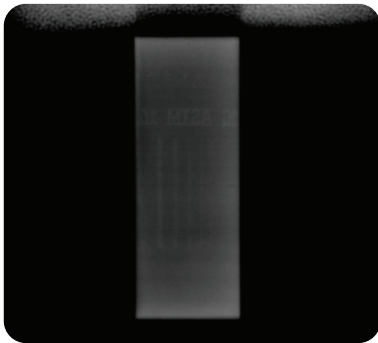


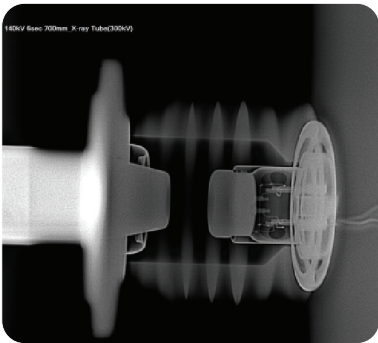
Image Examples



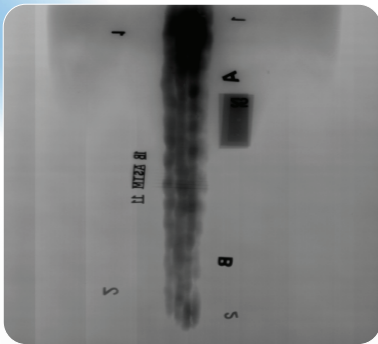
IR-192, Steel Pipe
exposure condition : 12sec.



Co-60, 60mm Steel Bar



X-ray Tube



Se-75 30mm welding phantom



High Voltage X-ray
cable connector

SENTINEL™DR

FXG-DR1012W 10"×12"

DR1417W 14"×17"



SENTINELASIA

12, Seolleung-Ro 103-Gil, Chunghae Build. 3F,
Gangnam-Gu, Seoul, Korea
TEL +82-2-558-3335 FAX +82-2-558-3336 E-mail bj.koo@sentinel-asia.com
www.sentinelndt.com

SENTINEL™ASIA

FXG-DR1012W / DR1417W

- 127µm, the smallest pixel size in the industry, gives high resolution images without compromising image quality
- 8.5mm, the minimized dead space helps user easily capture the image of subtle area
- Removable handle allows for optimized approaches for photography
- Available for both wireless and wired uses
- Battery to be continuously used while recharging, user can easily use in urgent situations even when the battery is empty
- Electronics shielding makes it possible to use in even the harshest environments
- Capability to connect between detector and computer

Wireless / Wired Operations for User Convenience

- Both wireless and wired modes are available for various and dynamic field situations
- Flexible options for choosing access points and ad-hoc communication modes
- Strong wireless connection provided with WPA2/WPA security
- Low power consumption during battery charging mode available while the detector is operating

Smart and Robust Design for Easy Accessibility

- Minimized dead space, reducing difficulties of detecting subtle areas
- Ultra-thin and light detector design increases portability and ease of carrying
- Removable handle enables use in various applications

Rugged Performance for Better Productivity

- Robust Mg-casted case
- Special electronics shielding protection, allowing use of a wide energy range
- Stable operation in dynamic temperature range
- Vibration, shock, and water-resistant design for operation in the harshest environments

Specification

	1012WGB	1417WGB
Scintillator	Amorphous Silicon with TFT	
Pixel Pitch	127µm	127µm
Pixel Matrix	2560 × 2048px	3328 × 2816px
A/D Conversion	14/16bits	14/16bits
Window Time	Min. 13.1ms Max. 60 sec.	Min. 13.1ms Max. 60 sec.
Data Interface	1Gbps Ethernet 300Mbps Wireless (802.11a,g,n)	1Gbps Ethernet 300Mbps Wireless (802.11a,g,n)
Limiting Resolution	3.9 lp/mm	3.9 lp/mm

	1012WGB	1417WGB
Energy Range	40 ~ 330kVp Ir-192	40 ~ 330kVp Ir-192
Size	385 × 320 × 18mm	475 × 399 × 18mm
Weight	3.3 kg (w/ battery, w/o handle)	5.3 kg (w/ battery and handle)
Housing	Mg	Mg
Operating Temperature	0°C~ 40°C (wireless) -20°C~ 50°C (wired, w/o battery)	0°C~ 40°C (wireless) -20°C~ 50°C (wired, w/o battery)
Storage Temperature	-20°C~ 50°C	-20°C~ 50°C

Battery

Battery Type	Lithium Ion
Charging Time	Typ. 2.5hrs
Operation Time	960 shots / 4hrs(@cycle time = 15 sec.)

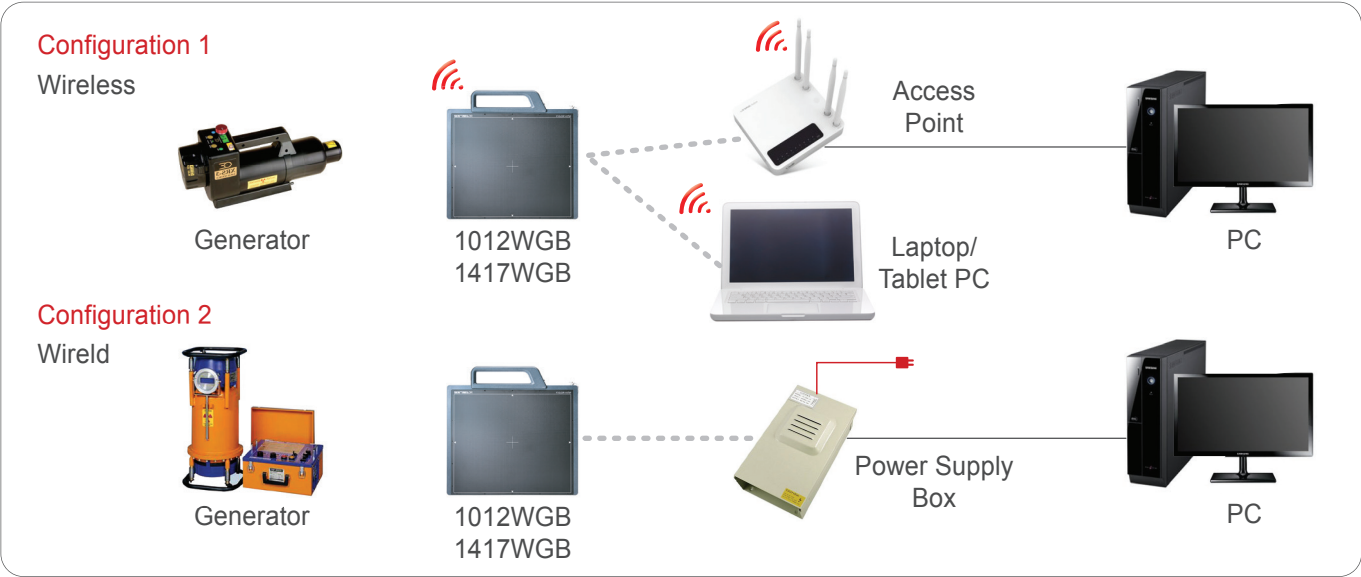
Applications Industrial non-destructive testing

- Weld and pipe inspection
- Security
- Forensics
- Casting defects
- EOD/IED
- Art
- Shipyard
- Postal inspection
- Archaeology



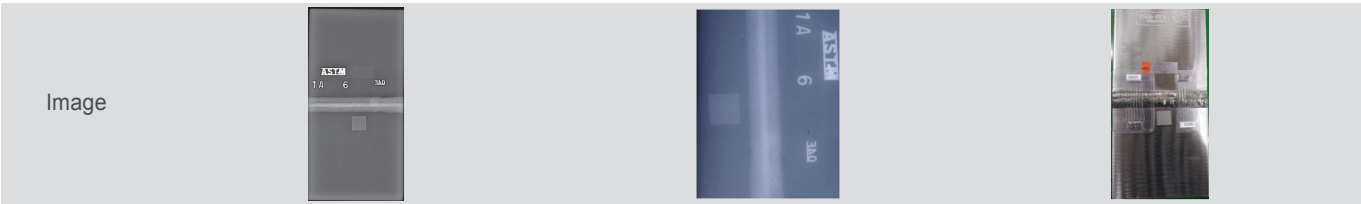
Flat panel X-ray, Gamma-ray Digital Radiography

Configurations



FXG-DR1012W vs Film

Item	FXG-DR1012W	Film(Fuji IX 100)	Description
Exposure Conditions	70kV, 5 Seconds	160kV, 50 Seconds	Enhanced to Lengthens X-Ray Generator Life
Cycle Time	12 Seconds	Film Loading and Placement Needs Darkroom	Instantly Evaluate the Object
Developing	None or Not Needed	Requires Chemical Processing	Environment-friendly



Generator : SID = 700mm
Object = FLAWED Specimen Kit(UT-6525), 200mm×100mm×10mm, Carbon Steel

Layout of Components

No.	Item
①	Case
②	Link Cable 7M (1ea)
③	LAN Cable 10M (1ea)
④	DR Power Cable (2ea)
⑤	External Battery / AP (Option)
⑥	Cable etc.
⑦	Battery Charger
⑧	Adaptor of Charger
⑨	Power Box

Carrier Box W 493mm × H 330mm × L 750mm

